

# hue.

Realtor Preview Package

Colours breathe  
with changing light

—they absorb,  
reflect, and echo  
their surroundings.



View Looking South







The charm of  
Port Moody rests in  
its small-town feel;

hue is set in a  
quiet residential  
neighbourhood in  
Moody Centre.



View Looking East





View Looking Northeast



# Flexible Living



Entertainment System Millwork  
(Included in 1, 2, and 3 Bedroom Homes)



## Accent Colour

- Natural (above left)
- Moonlight Grey (above right)



## Interior Finishes

- Premium Wide Plank, Natural Oak Tone Resilient Laminate Flooring
- Elegant Quartz Stone Countertops
- Roller Shades on All Windows
- Bedroom Closet Organizers

## Integrated Appliances

- Paneled Liebherr Refrigerator and Fulgor Milano Dishwasher
- AEG Gas Cooktop and Electric Wall Oven
- Cabinetry-Concealed AEG Hood Fan
- Samsung Washer-Dryer





Kitchen with Natural Accent







# Personalize Your Space

Junior One Bedroom Homes

## Flex Space

Dine  
Expandable Dining Area with Pendant



Entertain  
TV Console with Integrated LED Lighting



Adapt  
Open Finished Flex Space



## Nook

Store  
Concealed Storage



Work  
Desk with Integrated LED Lighting









F5 Plan

2 Bedroom

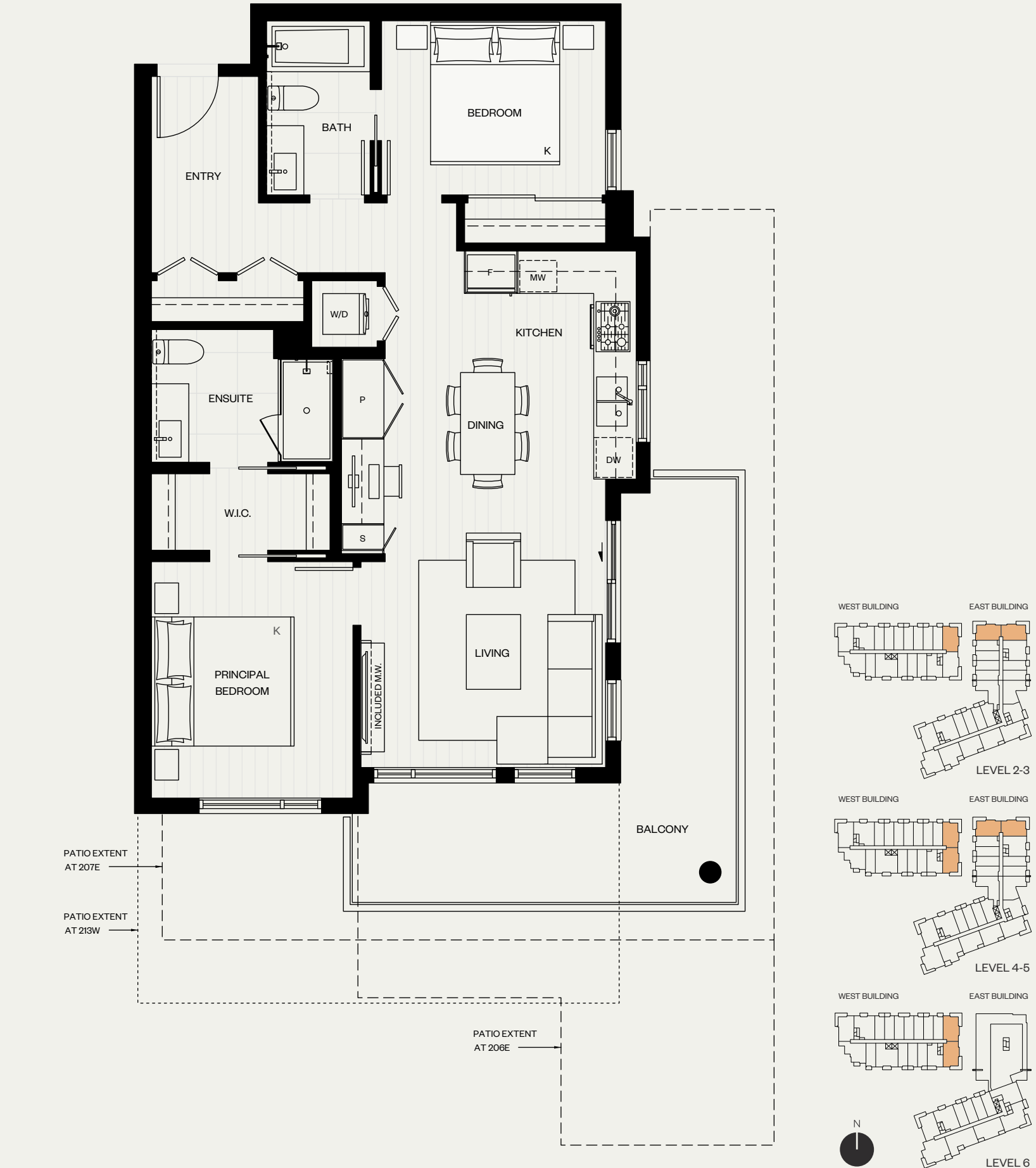
Interior Living

903-910 sf

Exterior

200-472 sf

Total 1,103-1,382 sf



The Developer reserves the right in its sole discretion to make modifications or changes to building design, floor plans, project designs, specifications, finishes, features, and dimensions, without prior notice or compensation to any person. Square footages are approximate and have been calculated from architectural drawings. Actual final dimensions following completion of construction may vary from those set out herein. E.&O.E.

G1 Plan

2 Bedroom + Den

Interior Living

945 sf

Exterior

56 sf

Total 1,001 sf



The Developer reserves the right in its sole discretion to make modifications or changes to building design, floor plans, project designs, specifications, finishes, features, and dimensions, without prior notice or compensation to any person. Square footages are approximate and have been calculated from architectural drawings. Actual final dimensions following completion of construction may vary from those set out herein. E.&O.E.



G3 Plan

2 Bedroom + Den

Interior Living

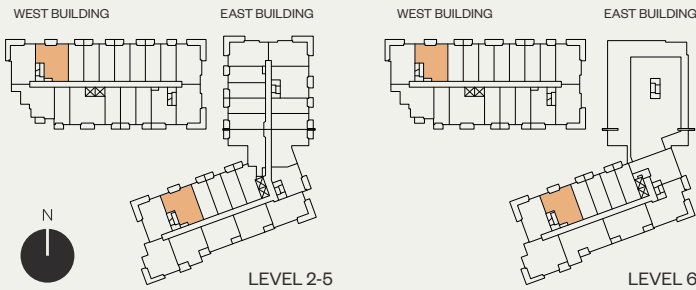
989-997 sf

Exterior

70 sf

Total

1,059-1,067 sf



The Developer reserves the right in its sole discretion to make modifications or changes to building design, floor plans, project designs, specifications, finishes, features, and dimensions, without prior notice or compensation to any person. Square footages are approximate and have been calculated from architectural drawings. Actual final dimensions following completion of construction may vary from those set out herein. E.&O.E.

G6 Plan

2 Bedroom + Den

Interior Living

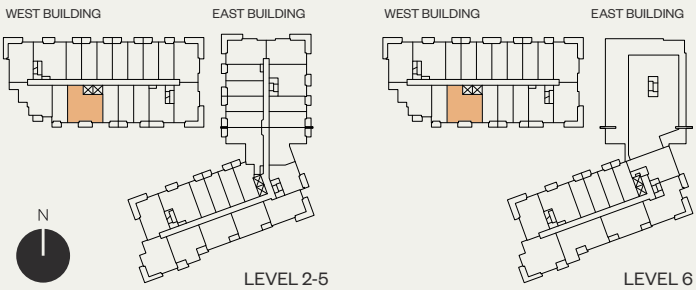
1,056 sf

Exterior

80 sf

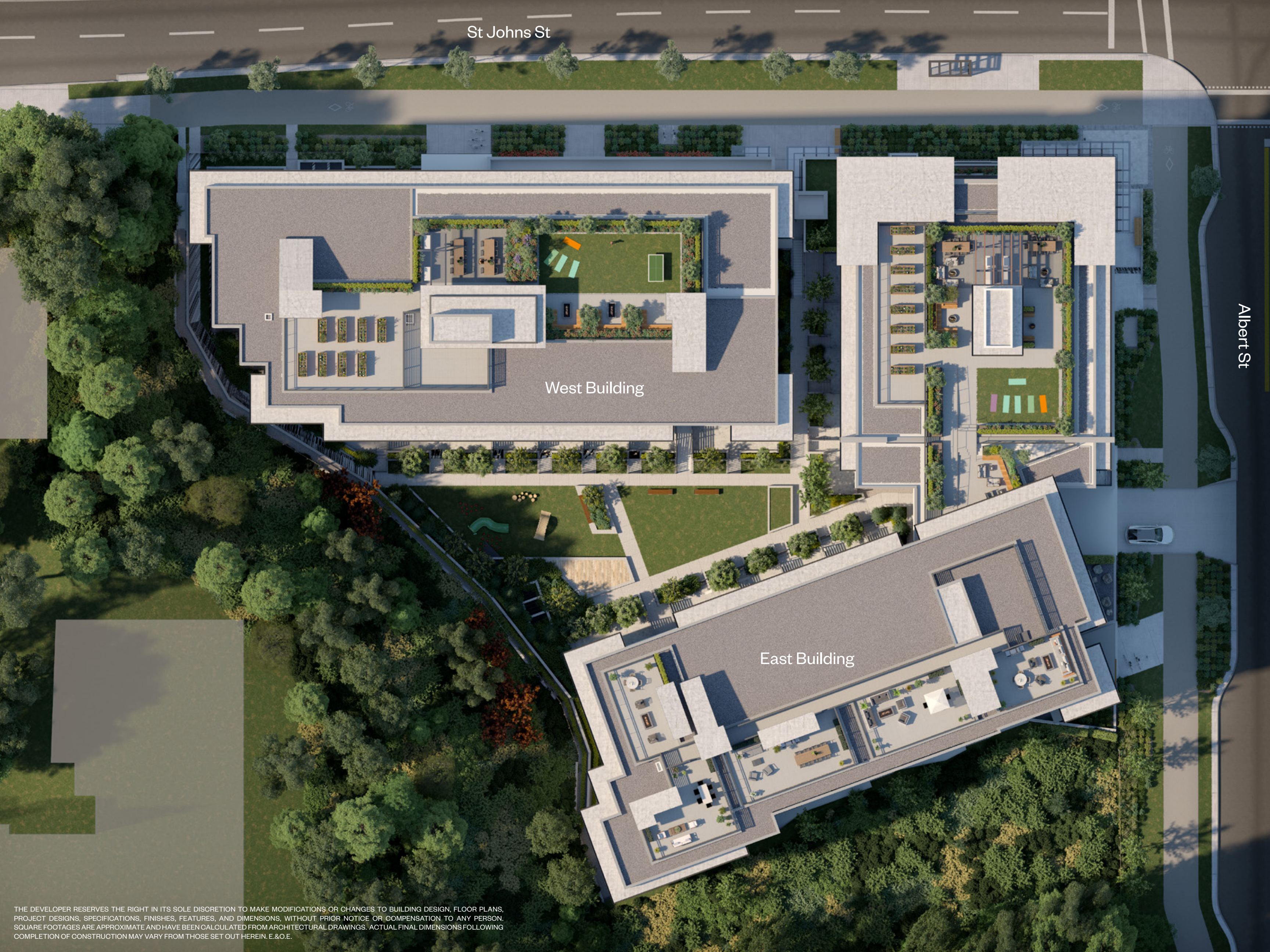
Total

1,136 sf



The Developer reserves the right in its sole discretion to make modifications or changes to building design, floor plans, project designs, specifications, finishes, features, and dimensions, without prior notice or compensation to any person. Square footages are approximate and have been calculated from architectural drawings. Actual final dimensions following completion of construction may vary from those set out herein. E.&O.E.





St Johns St

Albert St

West Building

East Building

THE DEVELOPER RESERVES THE RIGHT IN ITS SOLE DISCRETION TO MAKE MODIFICATIONS OR CHANGES TO BUILDING DESIGN, FLOOR PLANS, PROJECT DESIGNS, SPECIFICATIONS, FINISHES, FEATURES, AND DIMENSIONS, WITHOUT PRIOR NOTICE OR COMPENSATION TO ANY PERSON. SQUARE FOOTAGES ARE APPROXIMATE AND HAVE BEEN CALCULATED FROM ARCHITECTURAL DRAWINGS. ACTUAL FINAL DIMENSIONS FOLLOWING COMPLETION OF CONSTRUCTION MAY VARY FROM THOSE SET OUT HEREIN. E.&O.E.







# Building for Life

Starting out as a construction company has made us a better developer. For more than 37 years, we've developed a wide variety of homes across Metro Vancouver and know what it takes to build beautiful homes for everyday life. Buildings shape neighbourhoods and change lives in infinite ways. That's why we pay attention to every detail, no matter how small. We walk through every floor plan of every building to ensure our homes don't just look good on paper, they're spaces that enhance lives. After construction is complete, each building must stand the test of time.



567 Clarke + Como  
Coquitlam



Mirabel  
Vancouver



Semiah  
White Rock

This production is not an offering for sale. No offering for sale can be made until after a Disclosure Statement, issued pursuant to the Real Estate Development Marketing Act of B.C. has been provided to a prospective purchaser. This production material is not an offering for sale. No offering for sale can be made without a Disclosure Statement. The material provided herein is for general informational purposes only and is not intended to depict as-built construction designs or finishes. The Developer reserves the right in its sole discretion to make modifications or changes to building design, floor plans, project designs, specifications, finishes, features, incentives and dimensions, without prior notice or compensation to any person. Renderings and any depicted views are artistic concepts only. Square footages are approximate and have been calculated from architectural drawings. Actual final dimensions following completion of construction may vary from those set out herein. E.&O.E.



